

# HystVision/TUR



## Surgical Simulator

Diagnostic and Surgical Skills in Hysteroscopy&TUR









# HystVision/TUR

**HystVision/TUR** is a comprehensive training solution for Hysteroscopy&TUR examinations that includes training and exam modes, detailed performance data after each module, high definition graphics, videos, text materials and a 3D anatomy atlas.

The realistic feel of the haptic, makes HystVision/TUR an essential simulation tool to build confidence and competence when performing such a procedure.

The simulator comes in various options. There are HystVision and TURVision modules a combined HystVision/TUR version.







## HystVision/TUR Standard

- Mobile and convenient: sturdy wheelbase with adjustable height. A perfect solution for simulation centers and training rooms
- Two Full HD monitors: one touch-sensitive for all your menu controls and one for endocamera feed
- Proprietary magnetic feedback system
- Adjustable height
- Wheels for easy transportation
- Pedals for coagulation and electric dissection

### Resectoscope for hysteroscopy

We provide instrument imitations for every instrument manufacturer brand out there, available by special order

### Software

- Training and exam modes
- Detailed statistics after each module
- High definition 3D graphics
- Visual tips and guidelines
- Video and text materials
- 3D anatomy atlas

### Magnetic feedback

Our proprietary magnetic feedback system allows for unprecedented immersion. Furthermore, unlike mechanical feedback systems, it is far more reliable

## HystVision/TUR SMART

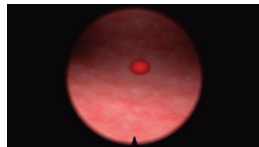
- Mobile and convenient, forged with on-the-go functionality in mind
- Full HD monitor for good quality visuals
- Touch-sensitive Full HD monitor for all menu controls
- Magnetic feedback system allows for a unique, realistic feel of tissue resistance
- Real resectoscope handle
- Pedals for coagulation and electric dissection



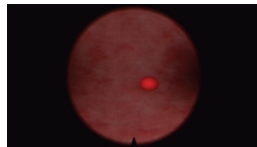


## Gynecology Modules

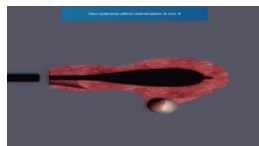
### Essential skills



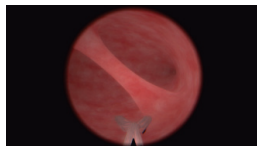
0° viewing angle camera  
uterus inspection



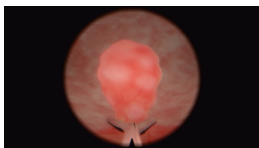
30° viewing angle camera  
uterus inspection



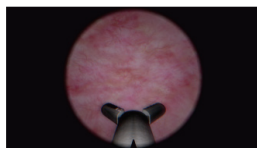
Uterus distention mastering



Resection of the  
intrauterine septum

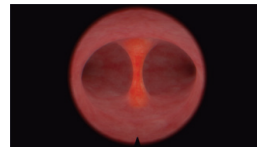


Polypectomy using grasper  
and scissors

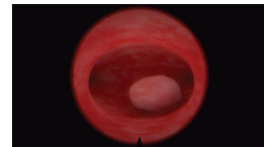


Taking a biopsy from  
the uterine wall

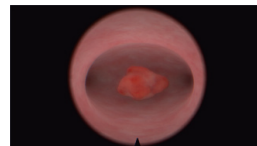
### Advanced resection



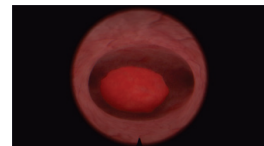
Resection of the  
intrauterine septum



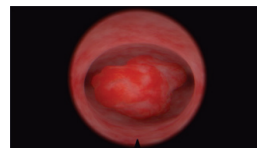
Resection of the myoma  
type 0 according to ESGE 1



Resection of the myoma  
type 0 according to ESGE 2

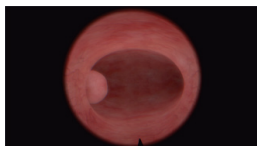
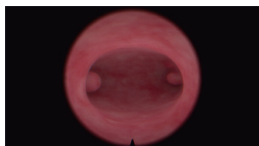


Resection of the myoma  
type 1-2 according to ESGE

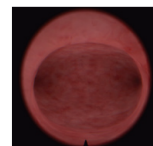
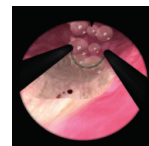
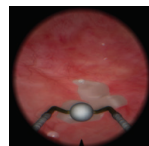


Resection of the polyp

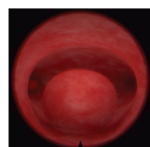
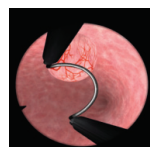
### Diagnostic hysteroscopy



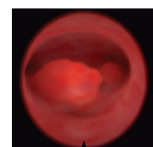
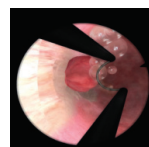
### Endometrial ablation



### Removal of myoma submucosal nodes

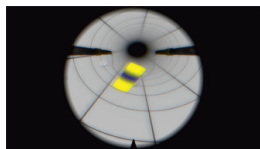


### Polypectomy

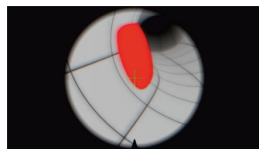


## Urology Modules

### Essential skills



Basic skills of working with endoscopic instruments



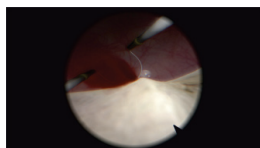
Basic skills with resectoscope for angular optics



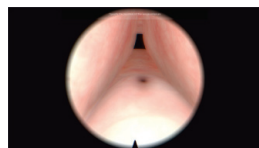
Basic skills with resectoscope



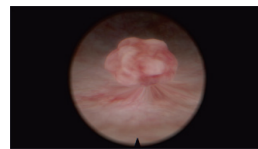
Resection of the prostate share



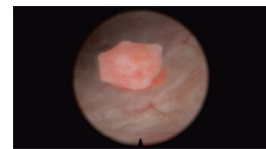
Test of hemostasis



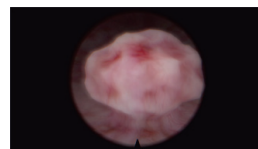
Visualization of anatomical landmarks



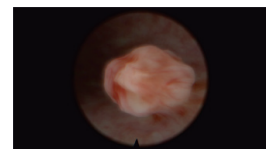
Polyp diam. 2-3 cm, base 1-2 cm, rear and left wall



Polyp diam. 5 cm, base 2.5-3 cm, rear and right wall

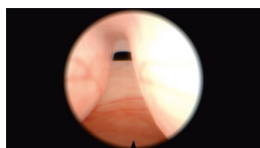


Creeping polyp, height 1 cm, base 3x2 cm, right wall



Two polyps, diam. 4 cm and 3 cm, bases 2x2 cm and 2 cm, back and left walls

### Transurethral resection of the prostate



Large adenoma with an average lobe



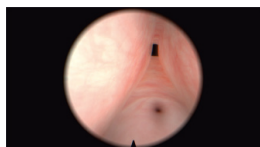
Large adenoma with lateral lobe, without middle lobe



Large adenoma with lateral lobes, with an average lobe



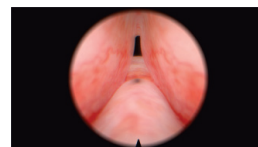
Medium sized adenoma with medium lobe



Medium sized adenoma without middle lobe



Small adenoma with an average lobe

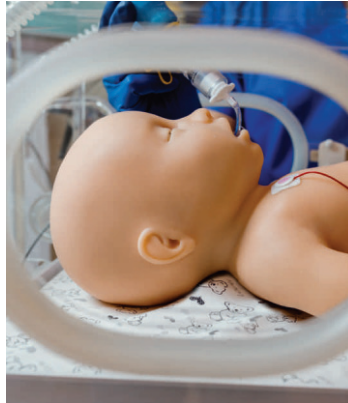


Small adenoma without middle lobe

# Have you seen our patient simulators?



Leonardo



Mia



Arthur

**MedVision** is a global company committed to the advancement of quality education in healthcare through simulation. Innovative design and cutting-edge technologies define its range of adult, pediatric, neonatal and surgical simulators.

For further information about any of our products, please contact your local regional representative.

---

## Sales Enquiries:

Global,  
Japan

☎ +81 (045) 716-6497  
✉ muneo.ogata@medvision.jp

Europe

☎ +43 (664) 453-5931  
✉ hello@mse-group.co

USA

☎ +1 (407) 840-8781  
✉ sales@medvisiongroup.com

Middle East,  
Africa

✉ mail@medvisiongroup.com